

Diary of a Labellover

By A. Fashionista

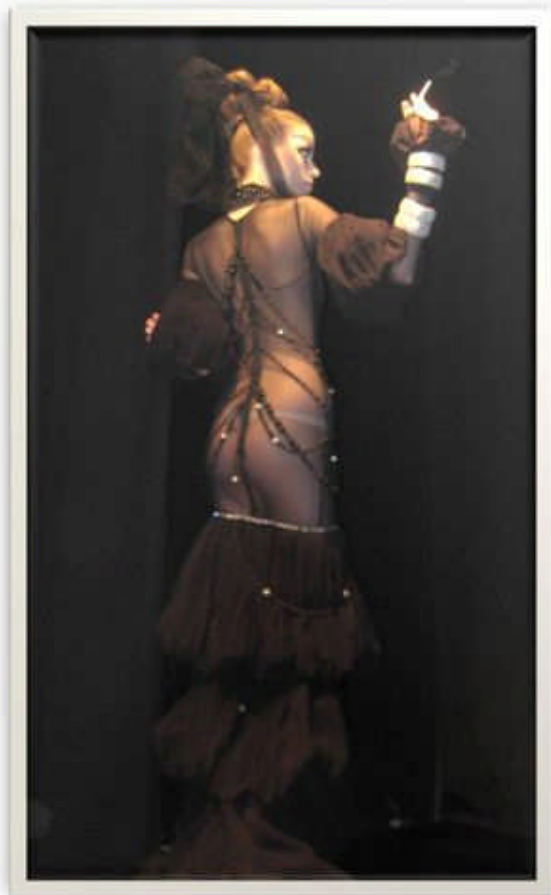
February 16, 2009

Soucha Runway Show Shines Brightly

Egyptian born designer Soucha rocked his FW09 presentation, softening his usually goth-romantic inspired collection by interweaving it bold jewel tones - Coral, Turquoise, Ceylon, and Emerald green. Emphasis was placed on the different silhouettes - from the fluid and and figure hugging mermaid silhouette, to empire waist, to the Grecian column.

Of course I have to mention the ruffles. They were ever present in some of my favorite looks of the night. Layers and layers to create illusions of roses. Luxurious fabrics in silks and chiffons were tastefully edited with jewels, never looking overdone. God forbid you look like a blue hair walking out off of a Texas ranch!

This is one of Soucha's greatest gifts - his ability to understand the needs of the modern woman. Can't wait for Spring!





http://diaryofalabellover.typepad.com/cheese_sandwich_diaries/2009/02/soucha-softens-his-fw09-collection-with-bold-jewel-tones.html